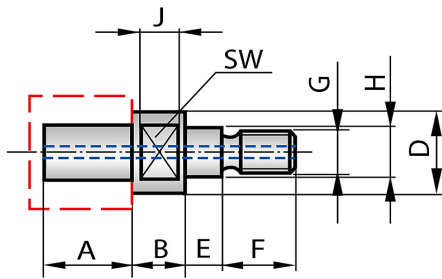


**Gewindebolzen (rechts) mit Kühlmittelbohrung**  
*Threaded studs (right) with cooling bore*

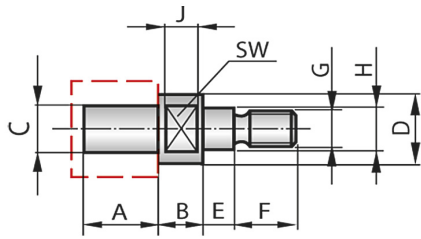


**Gewindebolzen mit Kühlmittelbohrung für HSK- und HJND-Innenschleifdorne (rechts)**  
*Threaded studs with cooling bore for HSK- and HJND-internal grinding arbors (right)*

Typ Type	Abmessungen [mm] Dimensions [mm]										Art.Nr. Art.No.	Anfrage Request Anzahl Quantity
	A	B	D	E	F	G	H	J	SW			
GBK 9	10	6.5	9	4	8.5	M5	5.2	4.5	7	30243-116		
GBK 12	12	7	12	5	10	M6	6.2	5	9	30243-117		
GBK 16	16	8	16	6.0	12	M8	8.5	6	13	30243-118		
GBK 20	20	9	20	7	14	M10	10.5	6.5	17	30243-119		
GBK 25	24	12	25	8	16	M12	12.5	9	21	30243-120		
GBK 32	28	13	32	9	18	M14	15	10	27	30243-121		
GBK 40	32	15	40	10	20	M16	17	12	32	30243-122		
GBK 50	40	17	50	12	22	M18	19	13	41	111487		

## Gewindebolzen (links) ohne Kühlmittelbohrung

Threaded studs (left) without cooling bore



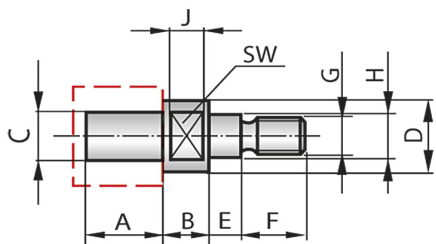
## Gewindebolzen HJND-Innenschleifdorne mit Linksgewinde

Threaded studs for HJND-internal grinding arbors with left-hand thread

Typ Type	Abmessungen [mm] Dimensions [mm]										Art.Nr. Art.No.	Bestellung Order	Anzahl Quantity
	A	B	C	D	E	F	G	H	J	SW			
GB 3.5	5	3.5	2	3.5	2	5	M2.2-LH	2.4	2.5	3	30243-023		
GB 4	5.5	4	2.5	4	2.5	5	M2.5-LH	2.7	2.5	3	30243-024		
GB 5	6.5	4.5	3	5	3	6	M3-LH	3.2	3	4	30243-025		
GB 7	8	5.5	4	7	3.5	7	M4-LH	4.2	4	5.5	30243-026		
GB 9	10	6.5	6	9	4	8.5	M5-LH	5.2	4.5	7	30243-027		
GB 12	12	7	8	12	5	10	M6-LH	6.2	5	9	30243-028		
GB 16	16	8	10	16	6	12	M8-LH	8.5	6	13	30243-029		
GB 20	20	9	13	20	7	14	M10-LH	10.5	6.5	17	30243-030		
GB 25	24	12	16	25	8	16	M12-LH	12.5	9	21	30243-031		
GB 32	28	13	20	32	9	18	M14-LH	15	10	27	30243-032		
GB 40	32	15	25	40	10	20	M16-LH	17	12	32	30243-033		

# Gewindebolzen (rechts) ohne Kühlmittelbohrung

Threaded studs (right) without cooling bore



## Gewindebolzen **ohne Kühlmittelbohrung** für HSK- und HJND-Innenschleifdorne (rechts)

Threaded studs **without cooling bore** for HSK- and HJND-internal grinding arbors (right)

Typ Type	Abmessungen [mm] Dimensions [mm]										Art.Nr. Art.No.	Anfrage Request Anzahl Quantity
	A	B	C	D	E	F	G	H	J	SW		
GB 3.5	5	3.5	2	3.5	2	5	M2.2	2.4	2.5	3	30243-012	
GB 4	5.5	4	2.5	4	2.5	5	M2.5	2.7	2.5	3	30243-013	
GB 5	6.5	4.5	3	5	3	6	M3	3.2	3	4	30243-014	
GB 7	8	5.5	4	7	3.5	7	M4	4.2	4	5.5	30243-015	
GB 9	10	6.5	6	9	4	8.5	M5	5.2	4.5	7	30243-016	
GB 12	12	7	8	12	5	10	M6	6.2	5	9	30243-017	
GB 16	16	8	10	16	6	12	M8	8.5	6	13	30243-018	
GB 20	20	9	13	20	7	14	M10	10.5	6.5	17	30243-019	
GB 25	24	12	16	25	8	16	M12	12.5	9	21	30243-020	
GB 32	28	13	20	32	9	18	M14	15	10	27	30243-021	
GB 40	32	15	25	40	10	20	M16	17	12	32	30243-022	
GB 50	40	17	32	50	12	22	M18	19	13	41	30243-034	